

DC Anacostia River Corridor Restoration Plan

Federal/DC Local Agency Joint Meeting #2

February 2, 2023 | 11:00 am – 12:30 pm



Please **introduce yourself in the chat:**

- Name & pronouns
- Organization
- What is your favorite thing to do on or around the Anacostia River?



Please **keep your microphone on mute** during the presentation.



Please **use the chat feature to ask questions or provide comments** during presentations.

AGENDA

11:00 WELCOME & INTRO

11:05 PHASE 1 RECAP
PHASE 2 APPROACH & RESULTS

11:40 Q&A

11:50 BREAKOUT SESSIONS

12:20 NEXT STEPS



Project Overview

DC's Comprehensive Restoration Plan for the Anacostia River Corridor that will help achieve the following priorities:

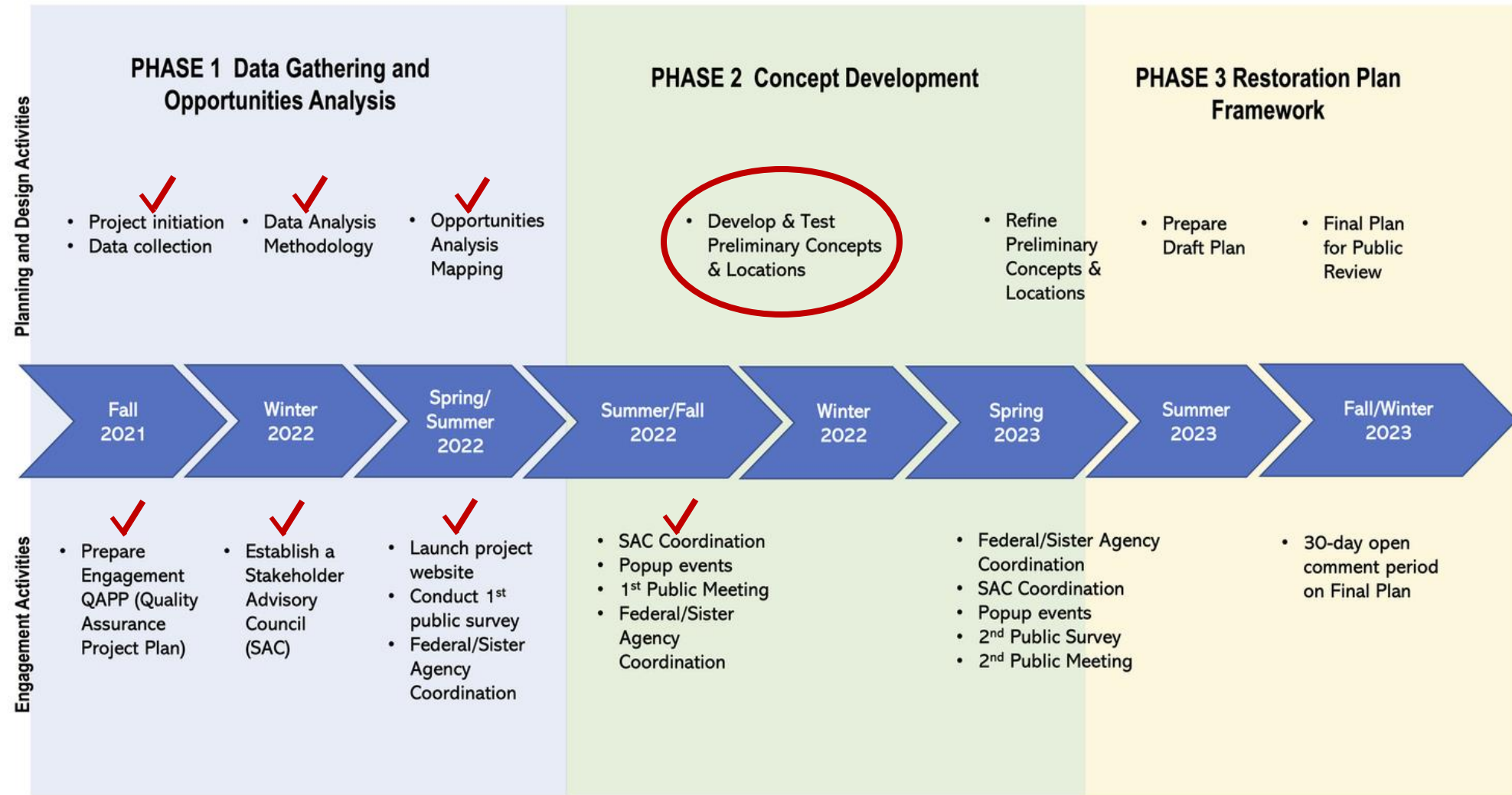
- **Restore Habitat**
- **Improve Water Quality**
- **Enhance Resiliency**
- **Enhance Public Access and Recreation**

The final Restoration Master Plan will provide a holistic plan with which the District and Sister/Federal agencies can use to apply for future grants and other funding to implement restoration and enhancement projects along the corridor.

The planning process supports increased community understanding of the history and ecology of the Anacostia River Corridor; building community consensus on solutions that will improve health and resiliency, and access to the river.



Project Schedule

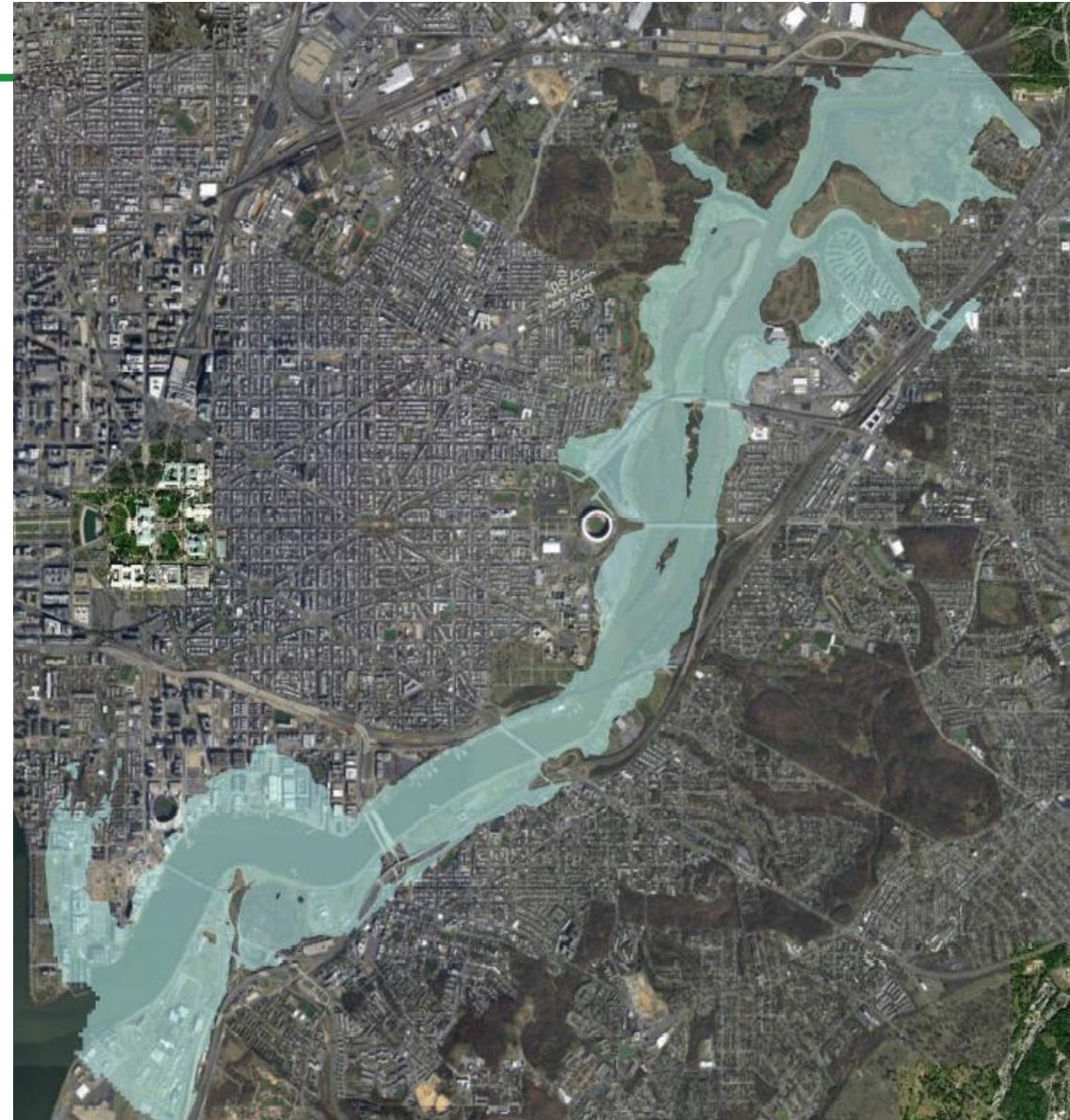


Goals for Today

Today's Review Session Goals

- **PRESENTATION:** Consultant team **presents results of Phase 2 concept development**
- **BREAKOUTS:** **Discussion of results; seeking feedback on synergies with existing or planned Agency efforts, areas of concern or conflict**

After the call, **the map will be made available for additional review and comments for one week.**

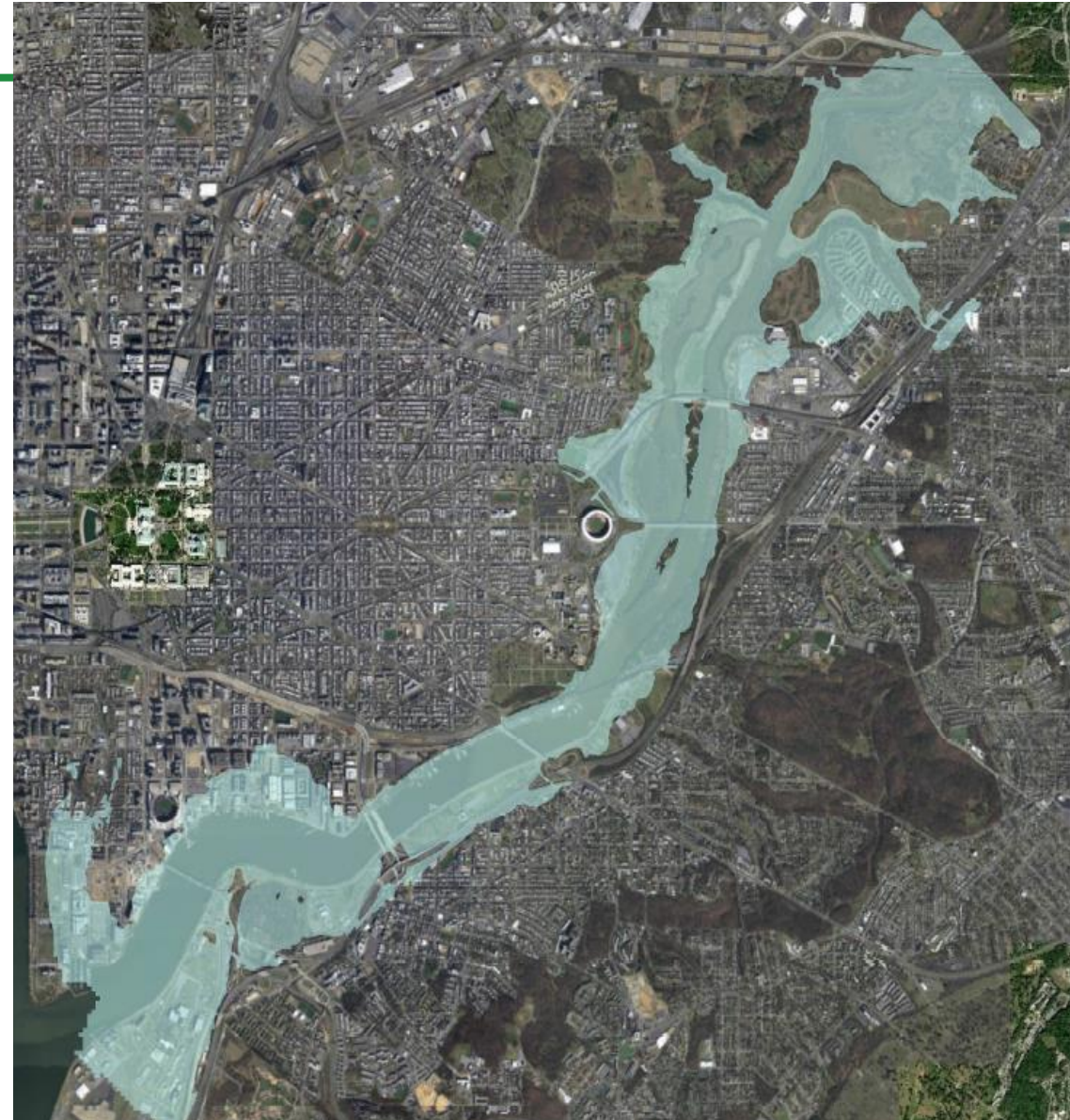


Project Overview

The “corridor” is defined as the entire tidal section of the Anacostia River in DC, reaching from the river channel to the upland edge of the 500-year flood plan.

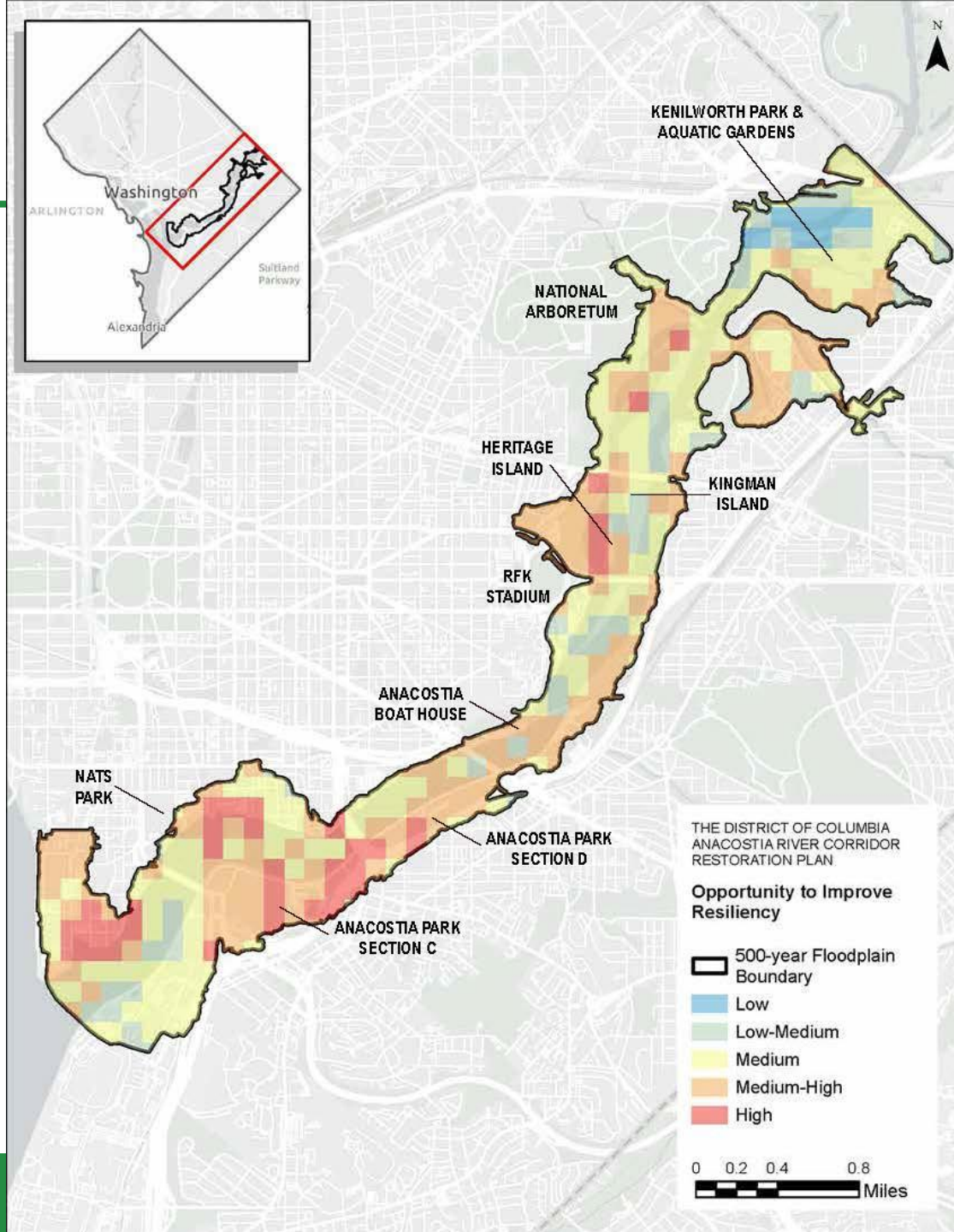
Phase 2 – Concept Development

- Draft **strategies & locations to address 4 goals; consider overlapping benefits of restoration and access strategies**
- Review and feedback from Sister/Federal Agency group
- Review and feedback from Stakeholders/Public
- Refine and Finalize Strategies and locations



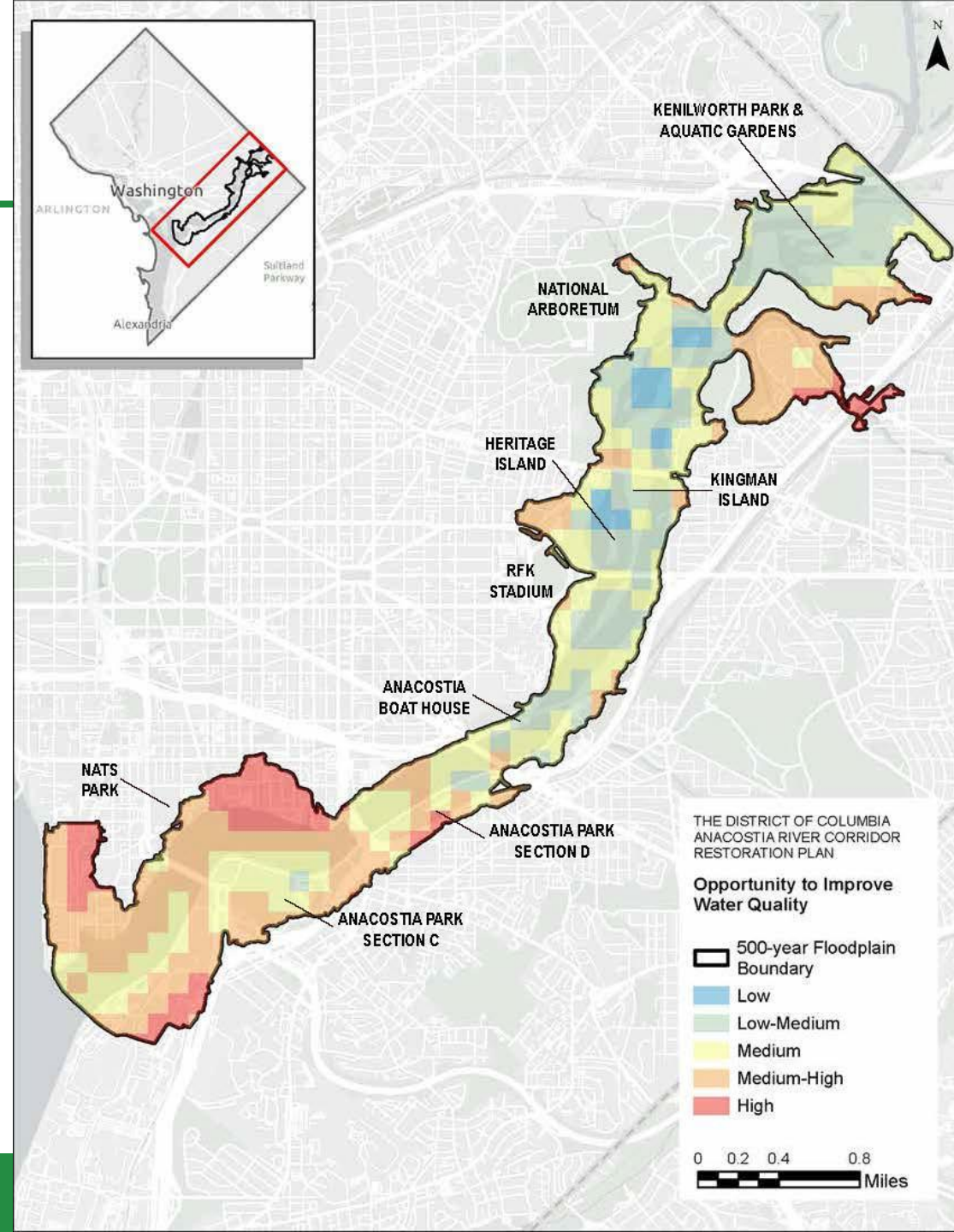
Phase 1 Recap

Opportunities Analysis Mapping Resiliency



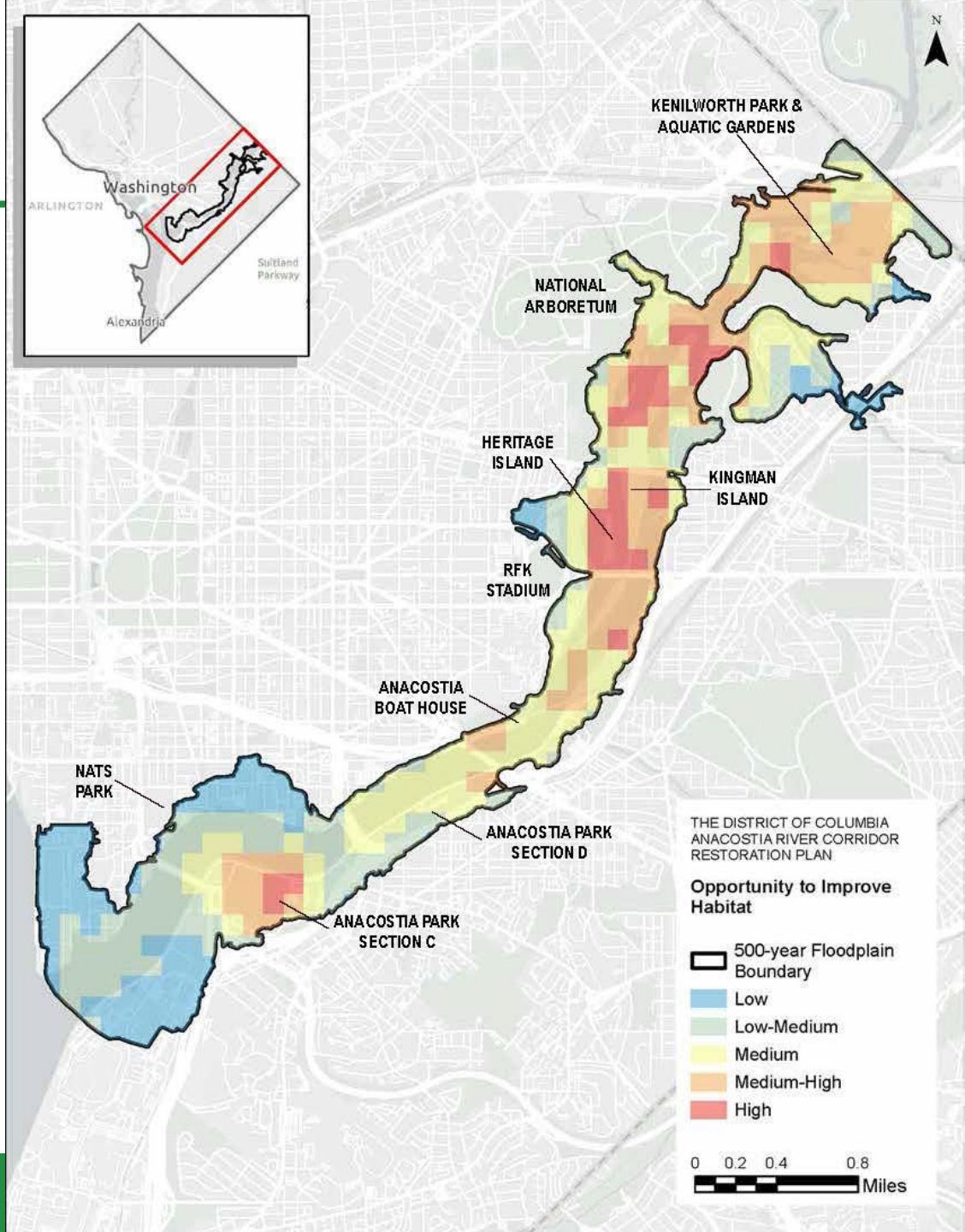
Phase 1 Recap

Opportunities Analysis Mapping Water Quality



Phase 1 Recap

Opportunities Analysis Mapping Habitat



Phase 1 Recap

Public Engagement

- **Public Survey on EngageDC.com and Popup events**
- Stakeholder Interviews
- Public Meeting



Photo Courtesy of @Krista Schlyer.

Welcome to the Visioning the DC Anacostia River Corridor Survey!

The Department of Environment and Energy is developing a restoration master plan for the DC Anacostia River Corridor. This plan will serve as a roadmap to restore habitat, enhance resiliency to climate change, improve water quality, and increase equitable access to recreational activities on the river corridor.

To move forward with the plan, we need your help with answering this survey! Your responses will help us understand your needs, experiences, and visions for the Anacostia River. In this survey you will be asked:

1. Questions about your priorities for recreational opportunities and environmental quality along the Anacostia River.
2. To identify locations that are important, or where improvements can be made.
3. Questions about you to help us ensure we are hearing a broad range of community members.

We understand that this project adds to a list of current or former projects focusing on the future of the Anacostia River. While this project focuses on river conservation issues and solutions to address them, we value all community input on the future of the Anacostia River. We will review input from other projects as we develop the masterplan to consider all social, economic, and community factors affecting the river corridor.

If you agree to participate in this survey, please proceed to answer the questions below. The survey should take about 10 minutes to complete. Thank you for being part of this project.

Kara Pennino

Pronouns: she/her
 Environmental Protection Specialist
 Watershed Protection Division
 Department of Energy and Environment
 1200 First Street NE, 5th Floor
 Washington, DC 20002
 Cell: 202-734-8738
 Web: doee.dc.gov

COMPLETE

Phase 1: Phase 1: Data Gathering and Analysis

Fall 2021 - Summer 2022

This phase includes the review and summary of existing plans and studies related to the Anacostia River and the project's primary goals, including restoring habitat, improving water quality, enhancing resiliency, and enhancing public access and recreation. The planning team will use this data to understand the current state and needs of the Anacostia River Corridor. During this phase, the planning team will use the data compiled from the project's first phase to select potential restoration and public access concepts that address the needs of the river corridor identified by the data and input provided by stakeholders in the community.

Public Events Occurring:

- Public Meeting 1
- Stakeholder Advisory Committee Meeting 1
- Visioning the Anacostia River Corridor Survey
- Various pop-up events

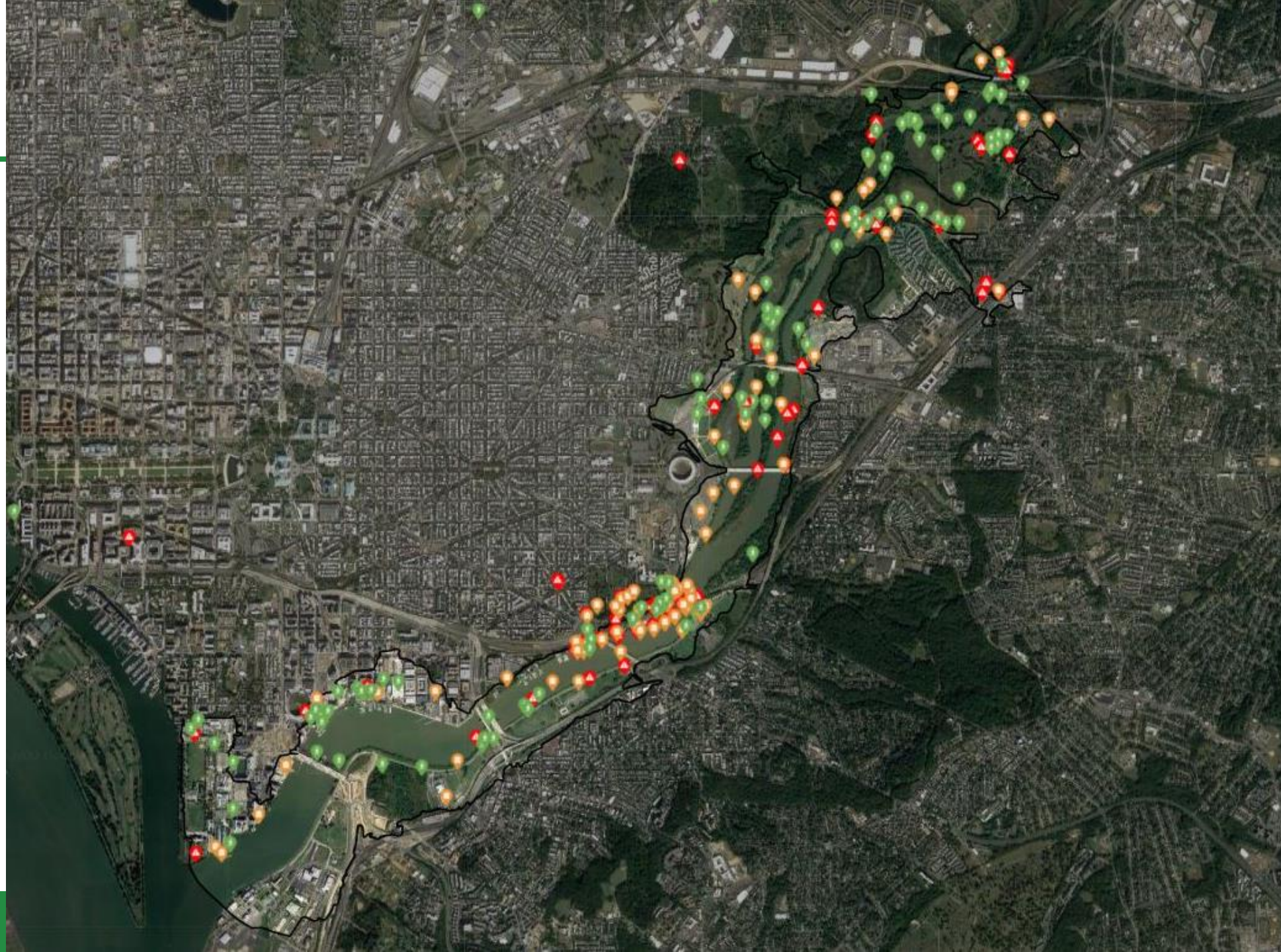
COMPLETE

Public Meeting 1

Phase 1

Public Engagement

- **Public Survey on EngageDC.com & Popup events**
- Stakeholder Interviews
- Public Meeting



Phase 1

Public Engagement

- Public Survey on EngageDC.com
- Stakeholder Interviews
- Public Meeting

the river is more accessible on the east side than it is on the west side. there's a road that abuts the river, there's flooding. AWS takes folks on boat tours also worked on the west side. challenge for people of color to access. parking is important; most drive or catch the bus. most are more likely to do stuff on the east side because I know where to park. affordability is an issue. parking is available and free on the east side of the river.

I participated in the NPG revamp process for Anacostia Park. NPG wanted to have more boardwalks. the community is vehemently opposed to that. boardwalks symbolize gentrification. I had a conversation with the superintendent about this. moved tennis courts up to the boardwalks and basketball to the back. Anacostia Park is accessible.

this is in response to collective trauma that the community has felt; it feels like we don't belong and are not welcome.

Linda Howard (exec director of summit fund); brought folks together for PG County and the Anacostia Watershed - people were all brought together. meet for 2 years. Doug Sigland part of the group - American Rivers - 10 most polluted rivers Anacostia is at the top of the list. and now we are no longer at the top! we all worked together to clean up the Anacostia

the River was living in poverty. people were still fishing and subsistence fishing; they would cut out lesions or fry it out;

as the waterfront infrastructure and bridge has been developed - 11st street, now the river is gentrified;

when it gets cleaned up it gets gentrified. hope that they allow the river to belong to all of us, because we are all residents of DC, no matter who were are.

11st street bridge to their credit, raised 30 million dollars for the bridge, they have also developed a land trust, assurance that the community doesn't get displaced.

final thoughts - DOEE project - it is important that DOEE works on this through a racial equity lens and be held accountable - otherwise people will be lost in the sauce.

Arboretum and Buzzard Point is so developed at this point

activity to help understand the value of trees... urban forestry admin - gracious to plant trees in the names of loved ones who were killed by guns, started these memory forests. that is a connection the community members then have to celebrate their deceased family, memory trees... gets them connected to trees..

a future memory tree at the Arb would open up a new experience and a new perception of who is welcome.

Trees planted include 8 in oxon run in park; 1 at ft stanton rec center; some on the west side of the river.

Diamond Teague (corps member who was slain in Ward 8) - really important to remember that...

Earth Conservation Corps made monumental steps for getting vulnerable communities down to the waterfront. events in the pump house and the river; engaging the community. There is no parking to get to the pump house... and the same thing is true for Buzzard Point. Mathew Henson center helps folks to get on the river on the west side. importantly it provides free access to people of color.

think of the waterfront of west side... parking is gone at the pump - no free parking... paid parking by the Henson center... just the point to have it be accessible.

Nat Arboretum on Benning Road is stunningly beautiful. However there's a fear factor that acts as a barrier. It's such a huge space. I never go there and enjoy it by myself. There are fears of majestic trees; a trauma of the history and the actions associated with this form of nature. It's healthy for us to be in the environment to penetrate the collective historical trauma.

Access is an issue. There is only one dock on the east side. There should be more than one. It doesn't need to be a marina. It should not be something that is private and exclusive. need more opportunities simple kayak, canoe put-ins. There should be a focus on education and enhancing comfort levels in accessing the water. (safety resources and training)

I was around for the AWI, Anacostia Waterfront Initiative. I used to work at Earth Cons Corps. stand on the deck of the pump house and you could clearly see the difference between west and east. West is developed and east is pristinely natural. We should keep it that way. enjoy recreation, picnics, walks, seen a cackle of turkeys! Habitat is there. Want to see it maintaining the natural function, fox, deer, turkey, so many different kinds of birds, critical to preserve it. At the foot of the 11th street bridge - they are building the east oval... kept it natural... on the west side is more structural and developed.

Kenilworth Aquatic Gardens

Kenilworth Aquatic Gardens:
1. Feels like we (people of color) are not welcome there
2. Signage/wayfinding is lacking.. very difficult to find, have to navigate.. have to know its there

It is a beautiful place; I go there to take walks but it's very seldom that you see people of color there unless there's a planned activity.

Access is an issue. Bus or car is needed to get there. It's not as accessible by metro

National Arboretum

Kenilworth Park

Anacostia Park

Kingman Island

Heritage Island

There's a lack of connection to the islands. It is so hard to know how to get to Kingman Island; still very difficult to find from RFK stadium. Lora Nunn, I know her. They have police there who will not allow you to park in front of the tennis courts when you want to access the park space. They ask folks to move which leads to this feeling that certain members of the community are not allowed to be there. These feel like hidden treasure, and that this "hiddenness is intentional; that these spaces are not intended for us.

ANACOSTIA PARK - low hanging fruit - early implementation opportunity because there is a NPG process in place... There's a "friends of" group and they have a wonderful corps of members who engage them when they come to the park. They just get those bathrooms fixed... struggling in keeping the public restrooms in good order.

Anacostia Park

there's great access on the east side Frederick Douglass bridge to the 11th street bridge - people are fishing! very accessible..

Navy Yard

Boating at Diamond Teague Park

Anacostia Park

They - gets people on the dock to fish. check on that. and AWS - get more African Americans on boats. helping address fear on water. so much opportunity there to increase this. Being able to get on a boat and quietly ride down that river is saving our souls.

Anacostia Park

Poplar Point

PRIORITY LOCATION: APAC, the ACC, DCEN have formed the citizens poplar point working group - meeting since December 2021; they have a website, collecting stories and information. there are 70 acres designated for parkland. Peter May at the DOI, asked what does 70 acres of park mean? it's open to interpretation. We want to get some clarity on that. floodplain and wetlands within those 70 acres.. want that to remain a natural habitat... 130 acres all together.. that 70 is has to be accessible to everyone.. that is the greatest fear that it won't be accessible. poplar point could theoretically be gated and that is not what we want for the open space. Want it on every Mayor candidate's radar screen. The concern is that folks who were engaged 30 years ago have passed away. There are commemorative memorials dedicated to Frederick Douglass.

Buzzard Point



Phase 1 Recap

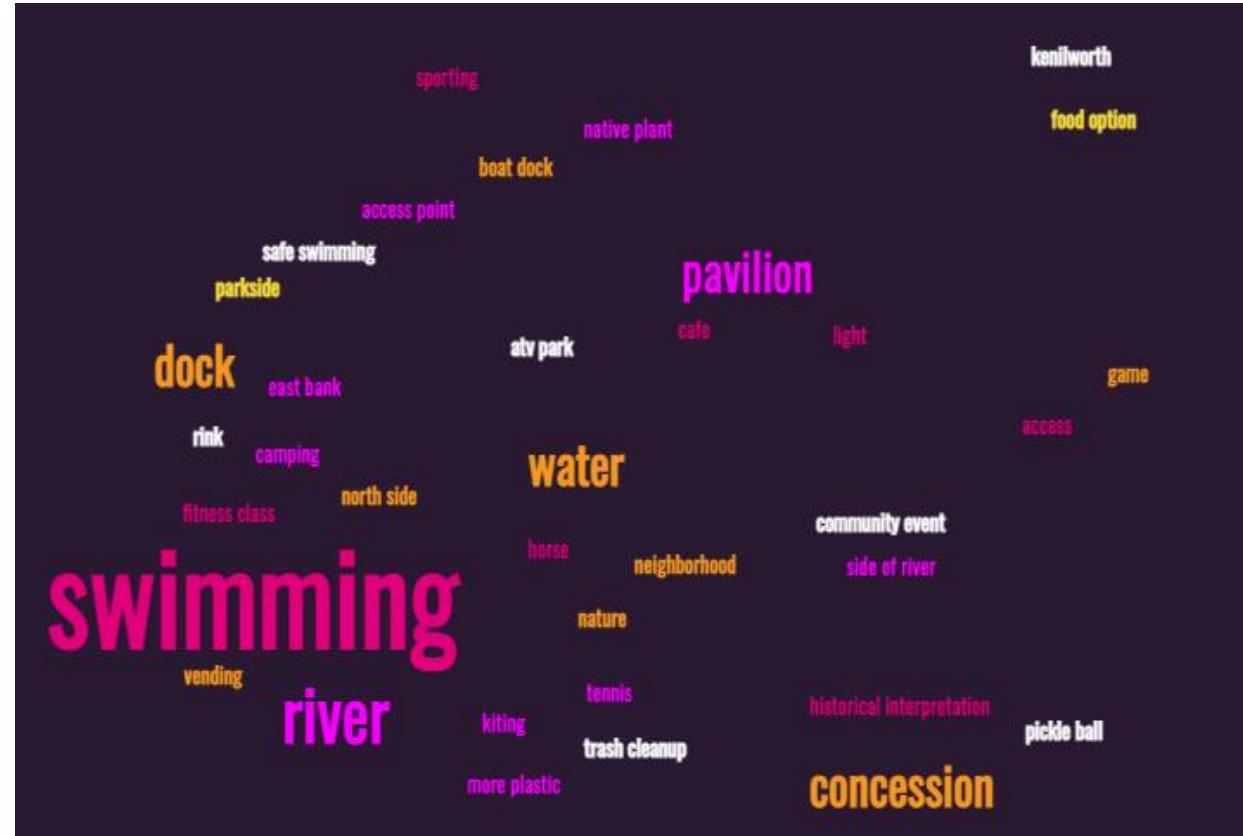
Community Input Themes

Which of these activities do you think needs to be more available along the Anacostia River Corridor?	RESPONSES
Nature/wildlife appreciation	152
Using the trails along the river (walking, biking, running)	147
Kayaking/Canoeing	143
Visiting parks along the river	116
Picnic or other social gatherings	113
Other Boating (Sailing etc.)	72
Fishing	65
Rowing	65
Other	38



Phase 1 Recap

Community Input Themes



Phase 1 Recap

Community Input Themes

85% of respondents noted **cleanliness of the river** as the highest rank activities on the river, followed by **natural and wildlife habitat (60%)**

35% of respondents noted **security and safety, health and fitness opportunities, and scenic beauty as highest rank activities**

50% or more of all respondents noted the following as high priority for immediate attention:

- Improving fish and wildlife habitat
- Reducing litter
- Improving safety and security
- Reducing flood risks

50% of all respondents noted the following a medium priority to make a positive impact:

- Improved recreation availability
- Improved access to recreation
- Improving scenic quality

Phase 2 Concept Development

Restoration and SW Management

Tidal Wetland / SAV Mosaic

Tidal Wetland / SAV Mosaic with Dredge Fill

SAV/ Open Water Aquatic Beds

Freshwater Mussel Restoration

Wetland Restoration Above the Ex. Shoreline (upland of seawall)

Riparian Vegetation Restoration (forest and meadow plantings)

Stream Daylighting

Stormwater Management BMPs

Public Access

Put-ins

Swimming

Fishing

Birdwatching/ wildlife watching

Gathering Spaces and Picnic Areas

Overlooks

Other amenities

Restoration and Enhancement Strategies Menu

**Tidal Wetland/
Submerged
Aquatic Vegetation
(SAV) Mosaic
&
Tidal Wetland/ SAV
Mosaic with
Dredge Fill**



Restoration and Enhancement Strategies Menu

Submerged Aquatic Vegetation Plantings



Restoration and Enhancement Strategies Menu

Mussel Habitat Restoration



Restoration and Enhancement Strategies Menu

Nontidal Wetland Restoration



Restoration and Enhancement Strategies Menu

Floating Wetlands



Restoration and Enhancement Strategies Menu

Meadow Restoration



Restoration and Enhancement Strategies Menu

Floodplain Reforestation



Restoration and Enhancement Strategies Menu

**Picnic / Gathering
Overlooks and
Restored Meadow
Plantings**



Restoration and Enhancement Strategies Menu

Improved and
Increased
Overlooks and
Fishing Access



Restoration and Enhancement Strategies Menu

**Wildlife Viewing/
Boardwalks
through Restored
Riparian Forest and
Wetland Habitat
Areas**



BREAKOUT DISCUSSION

- **What restoration and public access synergies do you see with the proposed strategies based on your agency's work?**
 - Are there new ideas that can support the plan's goals? Any feedback on how to continue momentum of this effort?
- **What potential conflicts or concerns arise based on the proposed strategies?**
- **What, if any, information is missing from your agency** that can help inform the team's refinement of these strategies?
- **Any other thoughts?**

Phase 2 Process

PHASE 2 : CONCEPT DEVELOPMENT

1. Review of Geospatial Opportunities Analysis & Community Input
2. Define Strategies and Conditions for their Suitability based on initial list
3. Additional Data Requests to DOEE/partner agencies
4. Preliminary Strategy Mapping
5. Internal Biohabitats Worksessions and Desktop Review



Key Biophysical Criteria for Strategies

Restoration and Stormwater Management

Tidal Wetland/ SAV Mosaic	Tidal Wetland/ SAV Mosaic with Dredge Fill	SAV/ Open Water Aquatic Beds	Freshwater Mussel Restoration	Nontidal Wetland Above the Ex. Shoreline	Riparian Vegetation	Stream Daylighting	Stormwater Management
Bathymetry	Bathymetry	Bathymetry	Bathymetry	Topography	Ex. Vegetation	Ex. Piped Streams	Ex. Imp. Surfaces
Topography	Topography	Topography	Topography	Ex. Wetlands	Ex. Wetlands	Ex. Imp. Surfaces	Existing SWM BMPs
Ex. Wetlands	Ex. Wetlands	Ex. Wetlands	Ex. Wetlands	Ex. Imp. Surfaces	Ex. Imp. Surfaces	Ex. Sports Fields	
Navigation Channel	Navigation Channel	Navigation Channel SAV Surveys	Navigation Channel Ongoing Rest. Activity Recent Mussel Surveys		Ex. Sports Fields		



Key Biophysical Criteria for Strategies

Public Access

Fishing	Kayak/Canoe/Paddle Board Put-In	Swimming	Birdwatching	Gathering Spaces	Overlook	Picnic Areas	Other Amenities
Public Comments	Public Comments	Current City Proposed Locations	Public Comments	Public Comments	Public Comments	Public Comments	Public Comments
Ex. and Proposed Wetlands	Ex. Marinas		Larger Contiguous Habitat	Open Public Land	Ex. and Proposed Wetlands	Open Public Land	
Ex. Roads/Parking	Ex. Roads/Parking		Trail Network				



Results

**GIS Web App –
presentation of results**



BREAKOUT DISCUSSION QUESTIONS

- **What synergies do you see with the proposed strategies based on your agency's work?**
 - Are there new ideas that can support the plan's goals? Any feedback on how to continue momentum of this effort?
- **What potential conflicts or concerns arise based on the proposed strategies?**
- **What, if any, information is missing from your agency** that can help inform the team's refinement of these strategies?
- **Any other thoughts?**

DEBRIEF

Room 1

Room 2

Other comments?



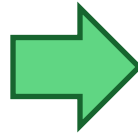
NEXT STEPS

Today

Sister Federal Agency
Facilitated Discussion

&

Independent Map
Markup (link to be
provided after this call)



Consultant
Team
Mapping
Refinements



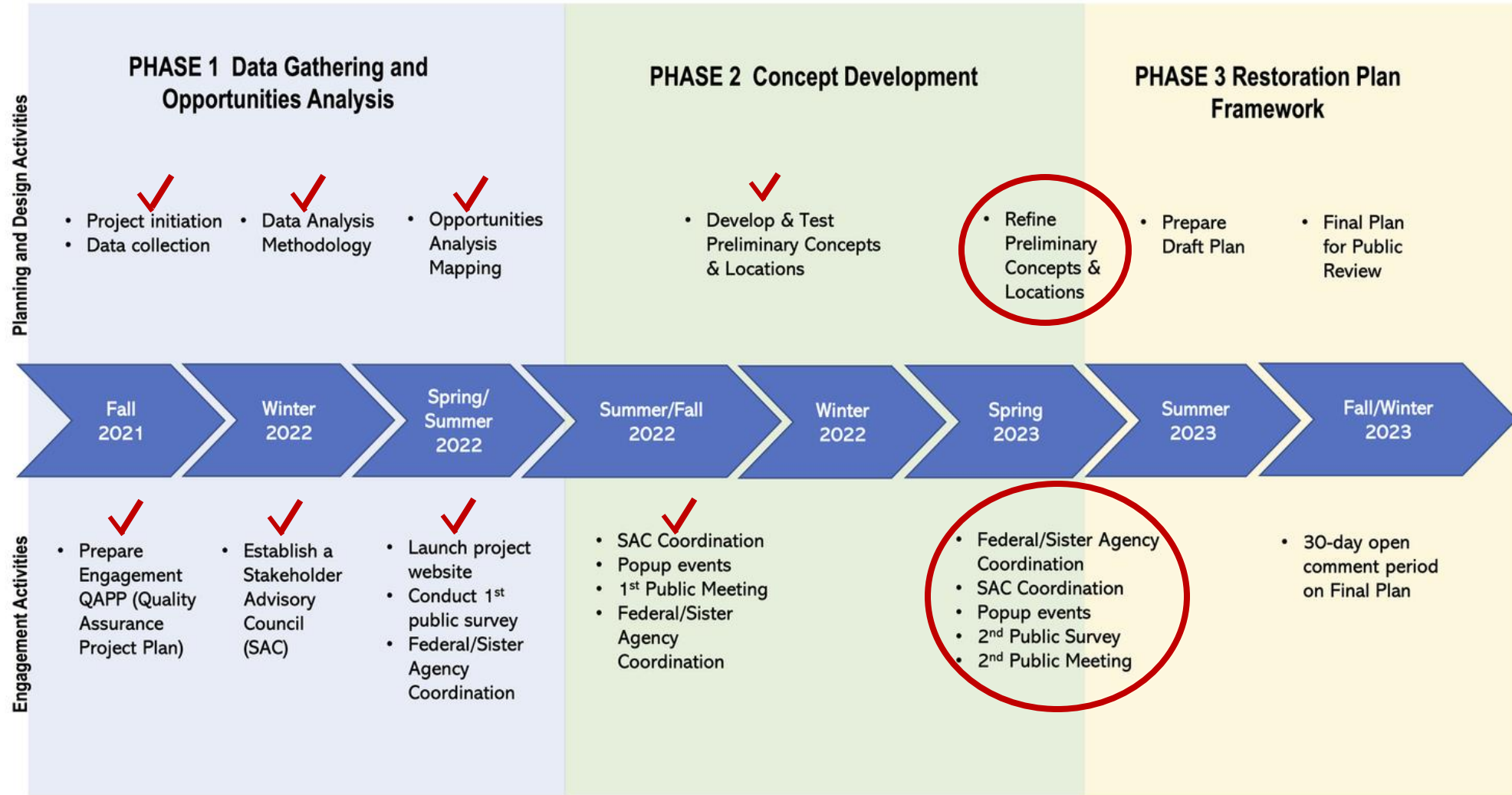
Stakeholder Advisory
Committee
Discussion &
Prep for Outreach



PUBLIC
survey, popup
events,
meeting to present
the results

Spring 2023

NEXT STEPS



Questions?

Kara Pennino

*Environmental Protection Specialist,
Partnering & Environmental Conservation Branch, Watershed
Protection Division, DOEE*

kara.pennino@dc.gov | 202-734-8738

