

Public Meeting#1:

## ***Background on the***

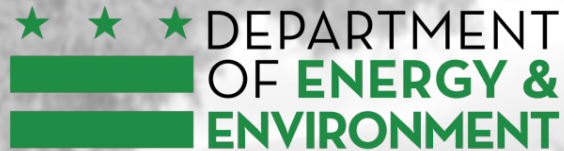
# ***DC Anacostia River Corridor Restoration Plan***

**Matt Robinson**

**Environmental Protection Specialist**

**Partnering & Environmental Conservation Branch**

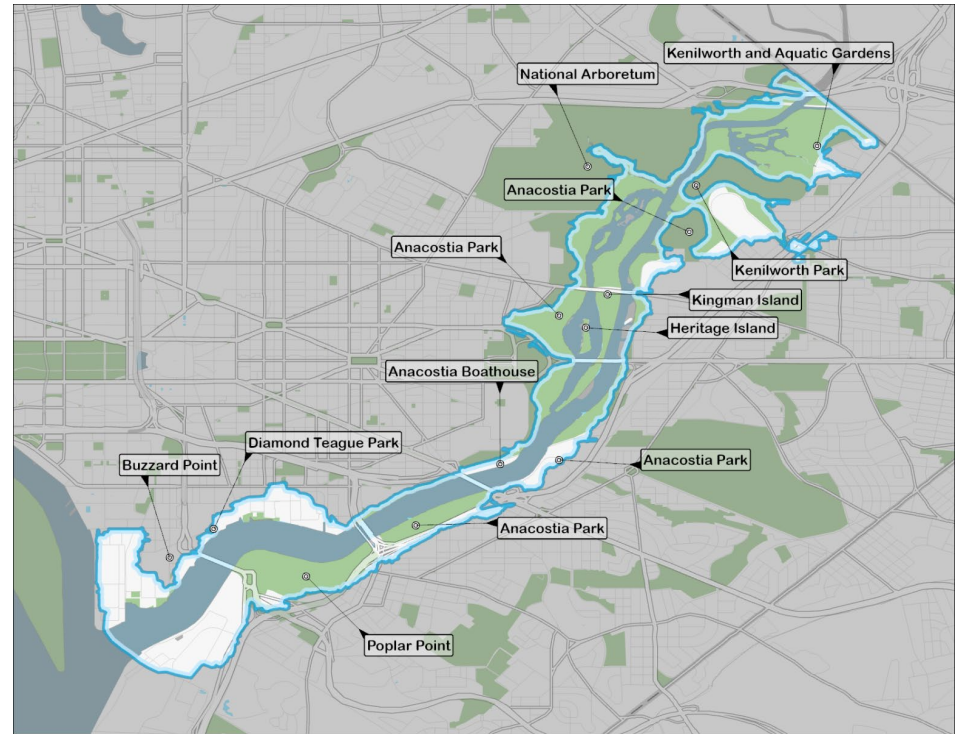
**Watershed Protection Division**



**September 22, 2022**

# What is the Anacostia River Corridor Restoration Plan (ARCRP)?

- DC's Comprehensive Restoration Plan for the Anacostia River Corridor that will help achieve the following priorities:
  - ✓ Enhance resiliency
  - ✓ Restore habitat
  - ✓ Improve Water Quality
  - ✓ Enhance Public Access and Recreation
- The “corridor” is defined as the entire tidal section of the Anacostia River in DC, reaching from the river channel to the upland edge of the 500-year flood plan.



Map of the Anacostia River corridor

# Why Now?

---



- The seas are rising!!! By 2080, the U.S. Army Corps of Engineers predicts up to 3.4 feet of additional sea level rise in DC.
- Current Major Initiatives/Projects Occurring along the Corridor:
  - ❖ 2015 DC Fisheries & Wildlife Omnibus Act - Promotion of Living Shorelines
  - ❖ Several Natural Resource Damage Assessment (NRDA) and Injury Assessment Projects (e.g. sediment project, Kenilworth Park)
  - ❖ Federal Clean Water Act programs to achieve water quality standards
- Cost savings through project integration. Implementing projects individually will add cost, complexity, and reduces opportunity to leverage multiple benefits (e.g. constructing flood wall vs. building park/berm/living shoreline).
- Need for a coordinated comprehensive document to take advantage of future federal funding opportunities.

# Funding and Project Team

---

- \$500,000 NFWF Chesapeake Small Watershed Grant received by DOEE in 2020 to develop the restoration plan and conduct early restoration of Kingman Lake
- DOEE issued a grant to Biohabitats, Inc. in Spring 2021 to develop the plan.
- Biohabitats, Inc has assembled a team experienced in data analysis, natural resource planning, ecological design, graphic design, and public engagement/outreach. Team members include:
  - ❖ CH Planning
  - ❖ Lee & Associates
  - ❖ Limnotech
  - ❖ LID Center
  - ❖ Anacostia Watershed Society
- Project Period: May 2021 - August 2023



# Types of Projects

---

Living Shorelines



Wetlands



Public Access/Recreation



Mussel Restoration



Submerged Aquatic Vegetation



# Major Project Tasks

---

## 1. Data gathering and opportunity analysis

- Gather existing geospatial data on a variety of subjects (e.g. hydrology, contamination, habitat, existing public access) from throughout the District's portion of the Anacostia River corridor.
- Conduct preliminary analysis of project opportunities from throughout the corridor.

## 2. Stakeholder Engagement

- Gather input from stakeholders (e.g. government agencies, residents) on the development of the DC ARCRP.

## 3. Concept Development

- Develop and vet restoration project concepts with stakeholders.

## 4. Master Plan

- Write a master plan proposing restoration projects at sites along the Anacostia River corridor.

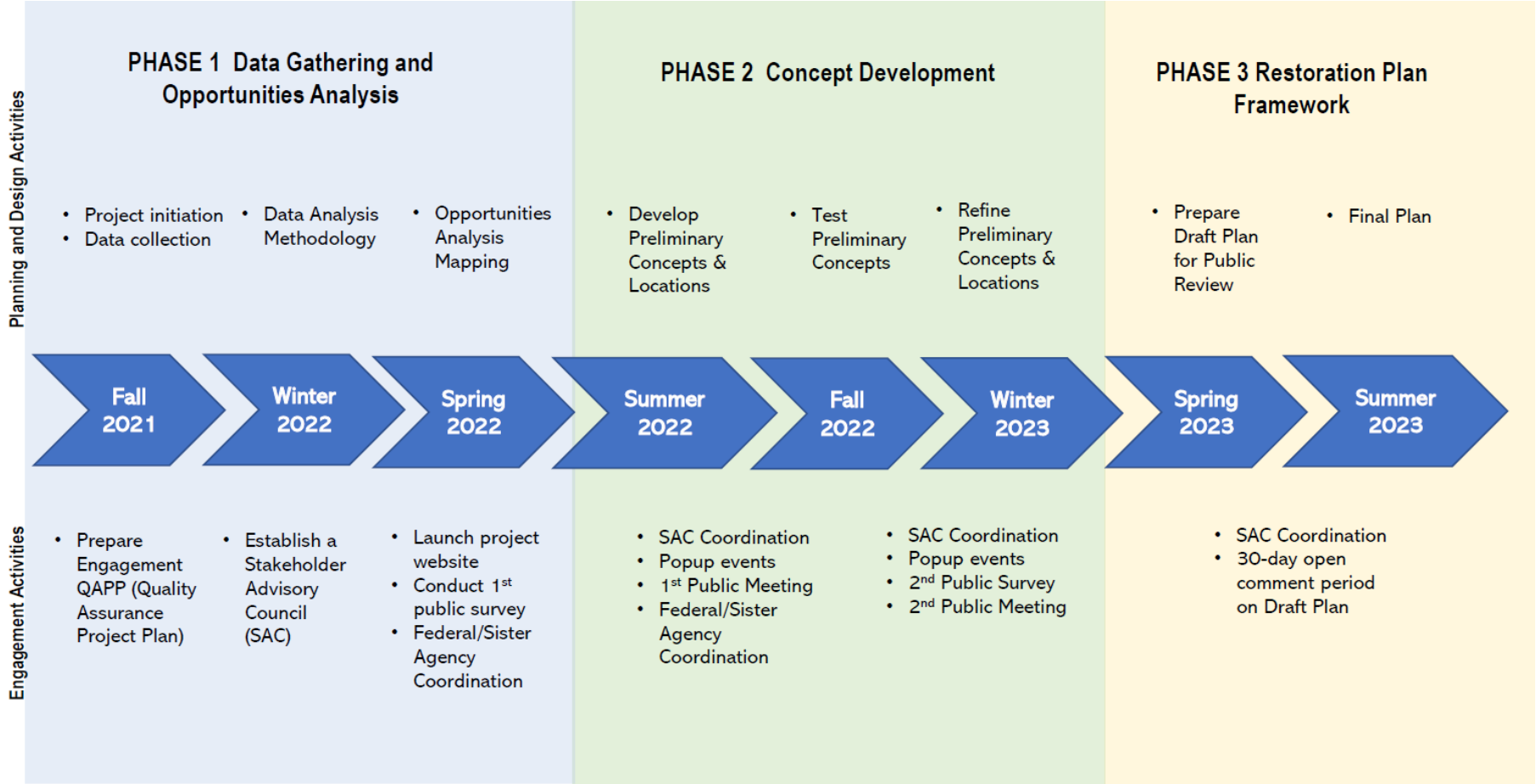
# Community Engagement

---

- DOEE desires to see as much stakeholder engagement as possible on the development of the ARCRP. This is something that has been lacking in previous plans developed for the Anacostia.
- Hold joint Federal/DC Sister Agency meetings on plan development. Meetings will focus on Phase I data analysis review and draft concept scenarios. First meeting was held
- Implementation of a public engagement plan. Major proposed components include:
  - ❖ Convening a Stakeholder Advisory Committee (SAC) to guide the planning process.
  - ❖ Convening a minimum of two (2) engagement meetings with the general public to gain input on projects and proposed concepts.
  - ❖ Interviews with fifteen (15) individual stakeholders
  - ❖ Conducting public surveys
  - ❖ Conducting outreach and engagement at pop-up events throughout the Anacostia River corridor over the next several months
  - ❖ Creating a project website and utilizing social media.



# Project Schedule





# Questions?

Matt Robinson,  
Environmental Protection Specialist,  
Partnering & Environmental Conservation Branch,  
Watershed Protection Division,  
[matthew.robinson@dc.gov](mailto:matthew.robinson@dc.gov), 202-420-1472



CONSULTANT TEAM



# Biohabitats



## PHASE 1 ANALYSIS PROCESS & APPROACH

### GIS-based Geospatial Opportunities Analysis (8 months)

- Compile, synthesize, analyze existing geospatial data to evaluate opportunities to address and improve existing conditions of the goal areas
- DOEE feedback through expert focus groups
- Provides an objective analysis as a foundation from which to start the planning process.

### 4 Goal Areas of the Restoration Master Plan

- Water Quality Improvement
- Habitat Restoration
- Enhancing Resiliency
- Enhancing Public Recreation and Access



## ANALYSIS ASSUMPTIONS

---

### **Water Quality Improvement**

Improved through implementation or enhancement of vegetation/buffers that can filter pollutants; protection or restoration of aquatic and shoreline areas to reduce erosion potential; reduction of impervious area; implementation of water quality BMPs to otherwise filter; sequester; or trap pollutants within the floodplain.

### **Habitat Restoration**

Functional habitat for a wide variety of native species (including American black duck, American shad, striped bass and freshwater mussels) is based on similar factors including stability of the environment and minimal impacts from human actions. Factors that impact aquatic and near shoreline habitat of wildlife of interest in this study include availability of existing habitat like wetlands, forest, and SAV and potential for habitat restoration based on previous analyses of favorable conditions. Given available data and scope of project it was impractical to focus an analysis on identifying populations of these specific species therefore the analysis focuses on general habitat improvements which should be beneficial to all species of significance.



## ANALYSIS ASSUMPTIONS

---

### Enhancing Resiliency

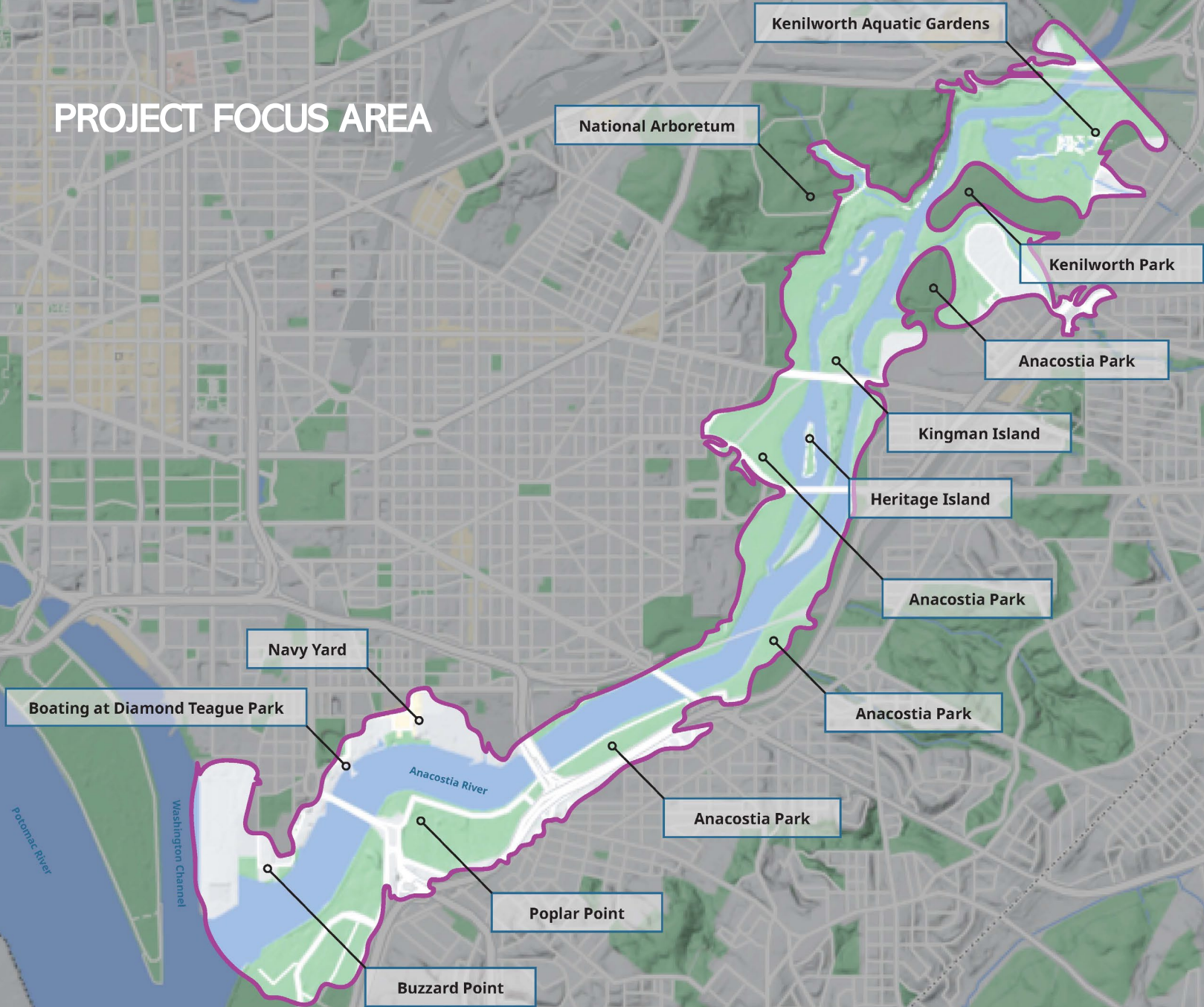
In alignment with DOEE priorities for this project associated with river corridor restoration, resilience is focused on considerations of nuisance flooding as well as the ability of natural resources along the corridor to continue to provide water quality and habitat goals into the future in the face of system changes resulting from sea level rise. The focus then turns to opportunities for projects that may mitigate impacts of high flows, flow surges, or physical impacts of surging waters through dissipating flow, softening shorelines, dissipate energy or disperse flows. There is also a focus on vulnerable communities residing within the floodplain that may experience these impacts.

### Enhancing Public Recreation and Access

Identify opportunity locations for actions/ strategies that enhance public access to the waterfront. Assumption is increased public access can be achieved through the addition and/or enhancement of community amenities such as new access points, expanded trail networks, public facilities, and the ability to access the waterfront through different modes of transit, with some focus on underserved communities in the vicinity of the project area.

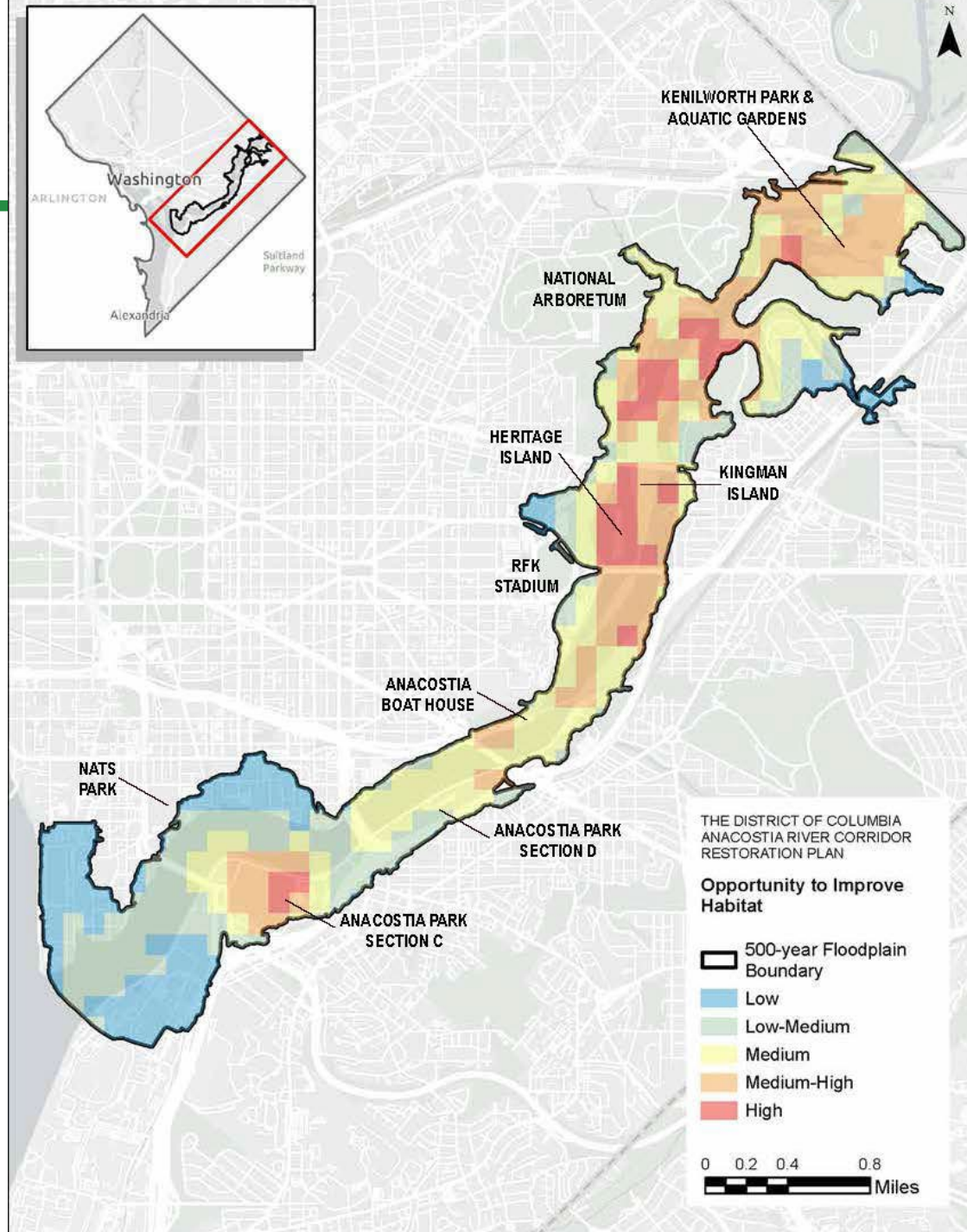


# PROJECT FOCUS AREA



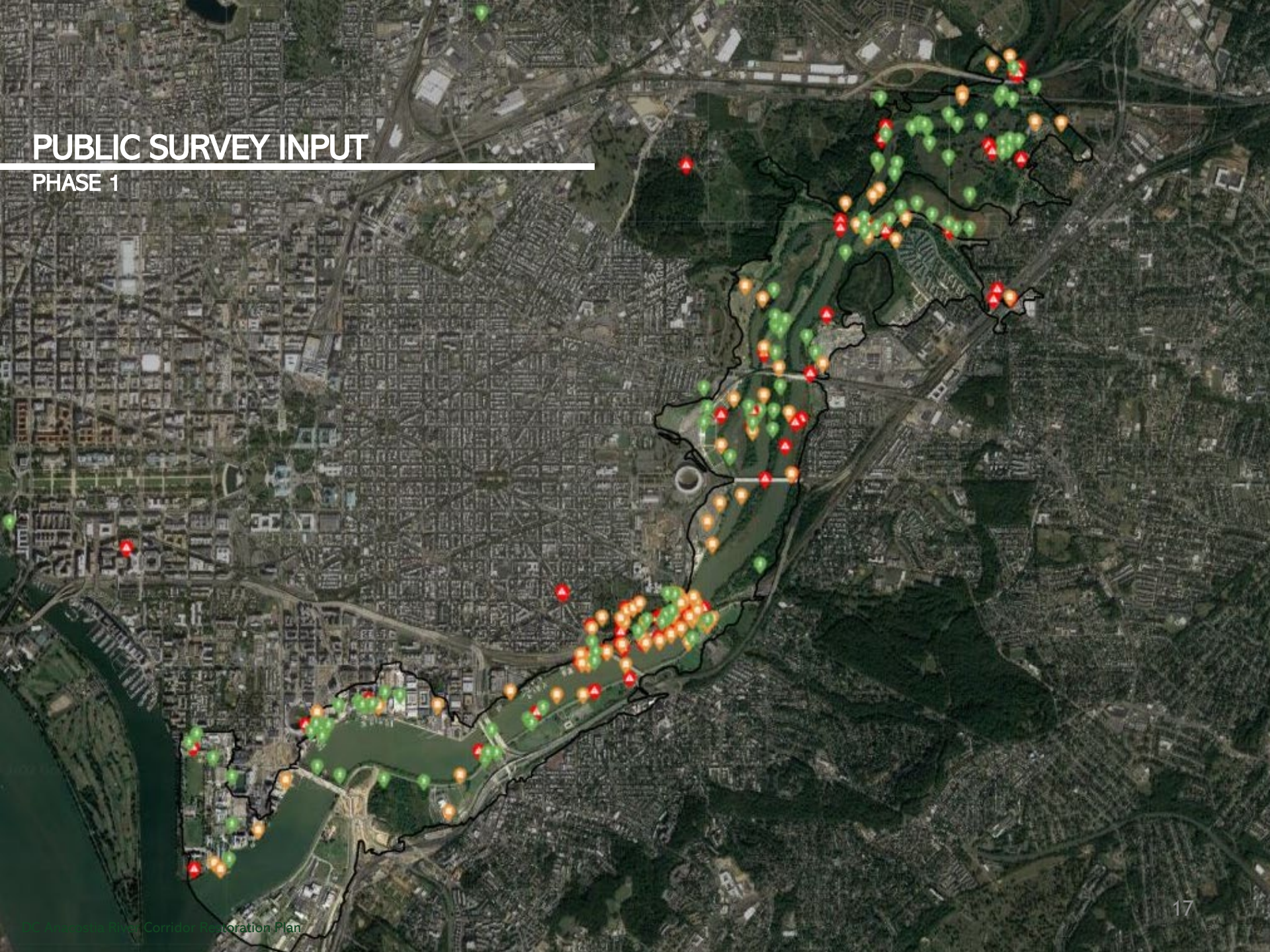
# HABITAT OPPORTUNITIES

## PHASE 1 INITIAL ANALYSIS RESULTS



# PUBLIC SURVEY INPUT

## PHASE 1





A scenic landscape photograph featuring a large body of water in the middle ground. The foreground is dominated by tall, dense reeds with green and yellowish-brown blades. The background shows a distant shoreline with rolling hills and some trees under a bright blue sky with scattered white clouds. The overall scene is peaceful and natural.

# RESTORATION & ENHANCEMENT STRATEGIES



**LIVING SHORELINE /  
TIDAL WETLAND RESTORATION**



# SUBMERGED AQUATIC VEGETATION PLANTINGS



**MUSSEL HABITAT  
RESTORATION**



**NONTIDAL WETLAND  
RESTORATION**



# FLOATING WETLANDS



# MEADOW RESTORATION



**REFORESTATION IN  
FLOODPLAIN**





**IMPROVED & INCREASED  
FISHING ACCESS**



# PADDLING/ KAYAK ACCESS AND FACILITIES



# BOARDWALKS THROUGH RESTORED HABITAT AREAS



**PICNIC / GATHERING OVERLOOKS  
& RESTORED MEADOW**